



**49, Chatford Drive, Meole Brace, Shrewsbury, SY3 9PH**  
£900 Per Month





49, Chatford Drive, Meole Brace, Shrewsbury, SY3 9PH

**£900 Per Month**

VIRTUAL TOUR AVAILABLE - A renovated and well-proportioned three bedroom terraced house conveniently located on the outskirts of Shrewsbury, providing excellent road links via the A5 ring road and convenient amenities with the Meole Brace Retail Park.

Available: 12/03/26

## Description

Comprising: Entrance lobby, good sized living room including electric fire and patio door, new kitchen including oven & ceramic hob with space for full height fridge/freezer and washing machine, understairs store cupboard and door to rear. Stairs to first floor landing, WC, new bathroom including shower, three bedrooms. Front and rear gardens including south facing decking to rear. Gas central heating, double glazing. EPC D



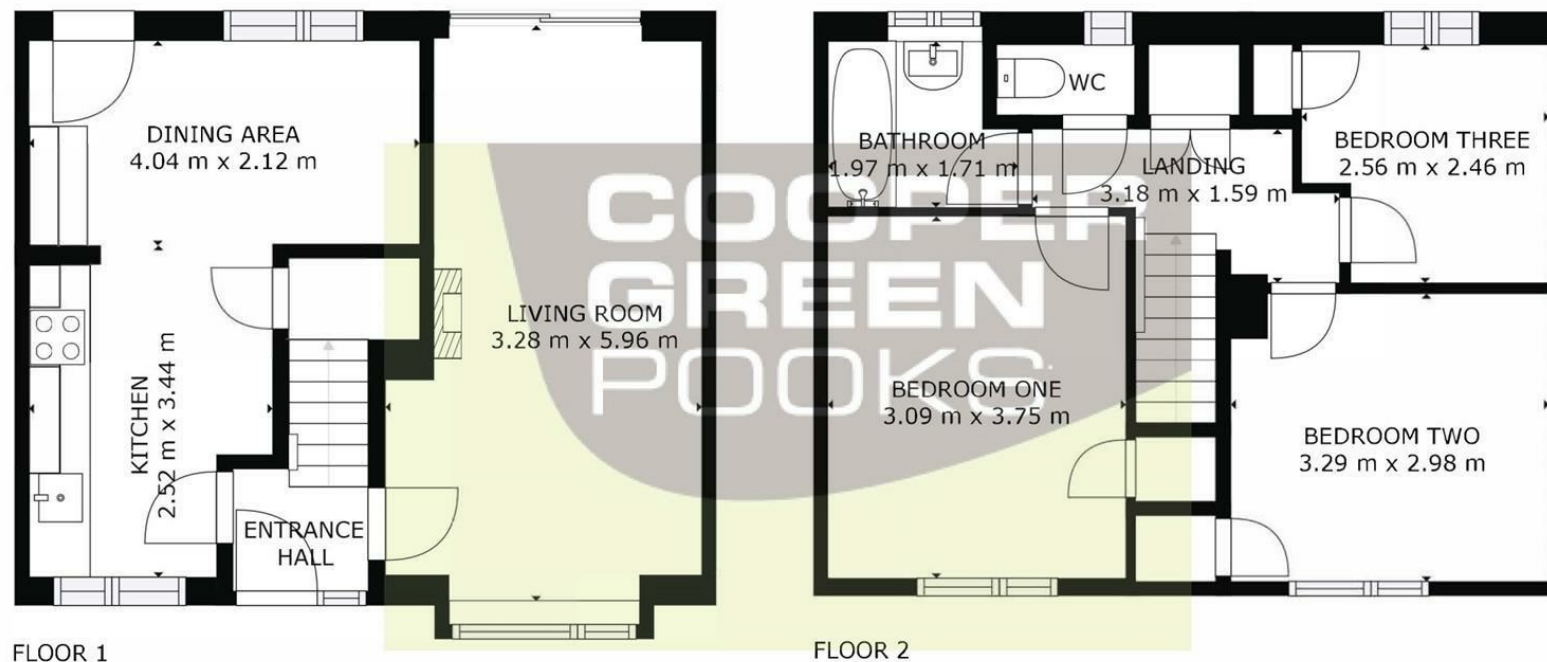
Unfurnished

Council Tax Band: B

Available: 12th March 2026

EPC: D

## Floor Plans



GROSS INTERNAL AREA  
FLOOR 1: 40 m<sup>2</sup>, FLOOR 2: 42 m<sup>2</sup>  
TOTAL: 82 m<sup>2</sup>  
SIZES AND DIMENSIONS ARE APPROXIMATE, ACTUAL MAY VARY.



These particulars, whilst believed to be accurate are set out as a general outline only for guidance and do not constitute any part of an offer or contract. Intending purchasers should not rely on them as statements of representation of fact, but must satisfy themselves by inspection or otherwise as to their accuracy. No person in this firm's employment has the authority to make or give any representation or warranty in respect of the property.